

FABRICATED T STRAINERS A SERIES

Design Features

- Standard sizes from 2" - 24". Larger sizes available upon request.
- Available with RF flanged ANSI B16.5 or Butt welded ends
- Standard thru bolt cover design.
- 304 SS perforated screens are standard.
- May be installed in horizontal or vertical pipelines.
- All welders are qualified to ASME Section IX.
- Strainers designed to meet the requirements of ASME B31.1, ASME B31.3 and / or ASME Section VIII, Div. I.
- Drains, vents, differentials and special covers are optional.
- Pressure drop as per Table-2
- End and cover flanges can be supplied as Slip on



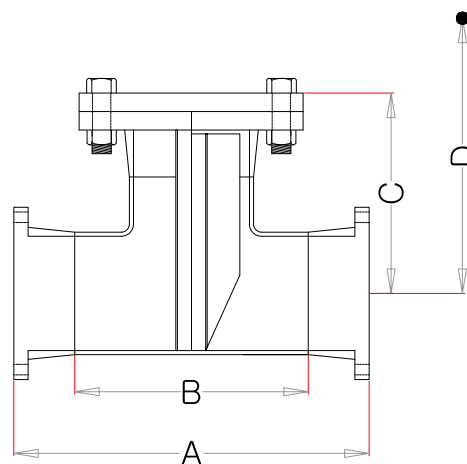
Material Data

COMPONENT	MATERIAL
Body	A234 Gr WPB/ CS TO IS1239/3589 / ASTM A106/SS304/ SS316
Cover	CS TO IS 2062, ASTM A105, SA516 Gr60/70, SS304, SS316
Connection Flanges	CS TO IS 2062, ASTM A105, SA516 Gr60/70, SS304, SS316
Fastener	A193 Gr B7, CS TO IS 1367, Stainless steel
Gaskets	Neoprene, Nitrile rubber, CAF, Teflon, SS304/316 Spiral wound

Standard Screens

SIZE RANGE	OPENING
2"-8" (50mm-200mm)	0.125 IN. (3.2mm)
10"-12" (250mm-300mm)	0.125 IN. (3.2mm)
14"-24" (350mm-600mm)	0.188 in. (4.8mm)

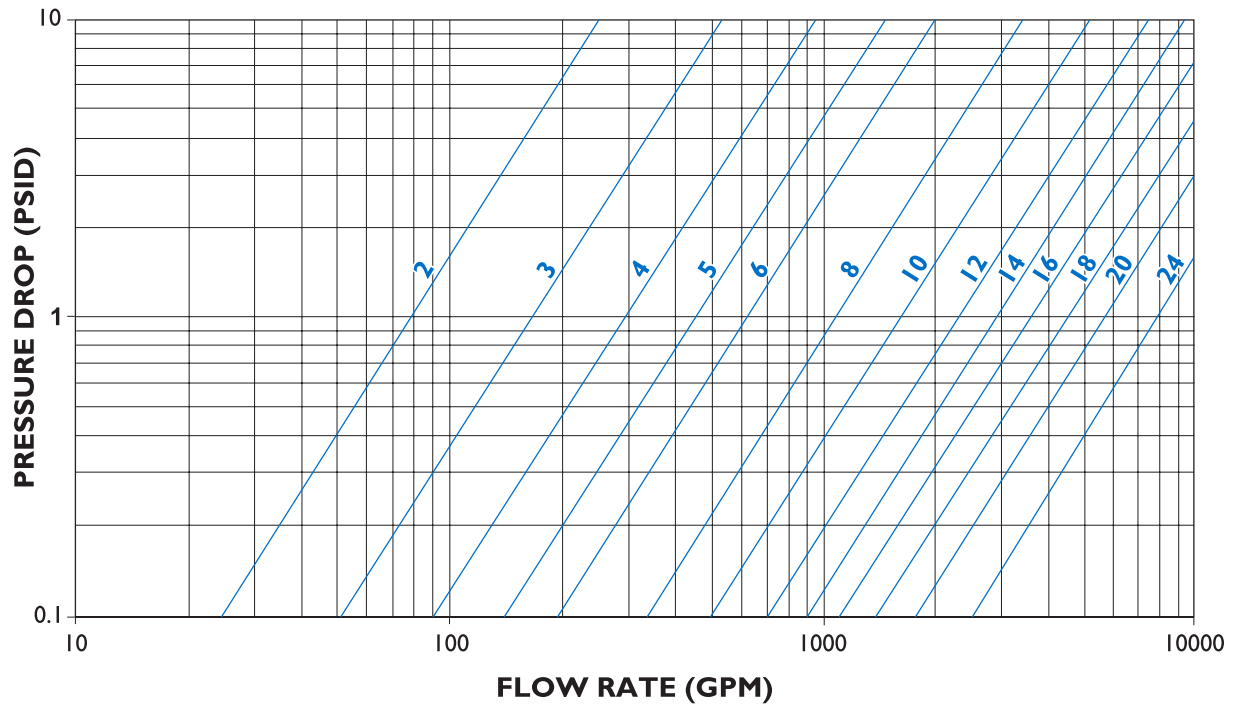
Dimensions



Size	A	B	C	D
50	254	127	146	279
80	311	172	179	349
100	362	210	205	413
125	425	248	237	489
150	464	286	257	540
200	559	356	305	660
250	635	432	348	762
300	737	508	400	889
350	813	559	441	991
400	864	610	468	1067
150	965	686	522	1194
500	1051	762	568	1305
600	1168	864	632	1473



Pressure Drop Curve for Fabricated T Strainers (Sizes 2" - 24")



Note: Pressure drop curves are based on water flow with standard screens.